



J.L. Anthony

2023 Catalog

Available Though

Ona Drapery Hardware Company

5320 Arapahoe Ave

Boulder, CO 80303

800-231-4025 phone

info@onadrapery.com email

www.onadrapery.com web

finials



LIVINGSTON



MT. VERNON



TULIP



LEXINGTON



STRATFORD



BEVERLY



BORDEAUX



ESSEX



PLYMOUTH



CAP



THIN CAP



BELCLAIRE



NAPOLEAN



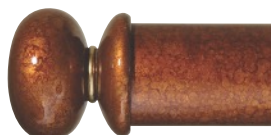
DREXEL



MIRAMAR



BELFORT



GILLON



LOUIS



LEAF



ACANTHUS



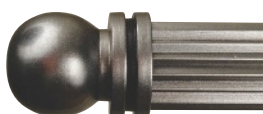
CANTEBURY



ZYLINDER



KEGEL



SPHARE



FLAME



LORRAINE



ARMSTRONG



URN



RUSSIAN



CHIPPENDALE



SPINDLE



BANNISTER



PRESCOTT



NORMANDY

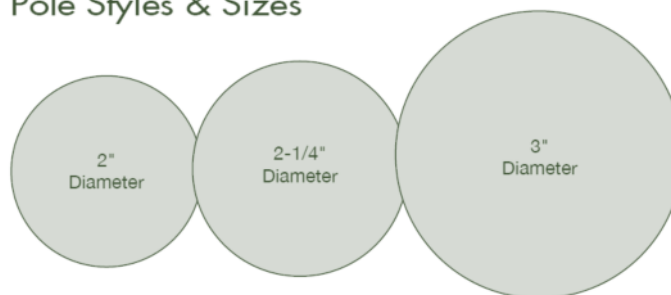


ABBOTT



WURFEL 2

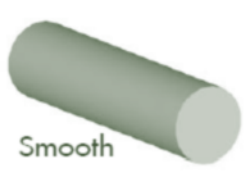
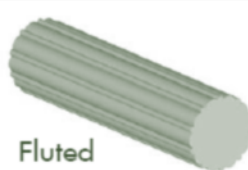
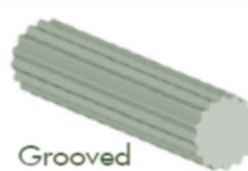
Pole Styles & Sizes



- **Full Round** – The classic style. Requires purchasing separate brackets. Recommended for decorative use only.
- **Non-Traversing** – A J.L Anthony exclusive. Allows for placement of brackets anywhere along the back side of the pole. The concealed brackets, included with the pole are heavy-duty and are finished to match the finish on the pole.
- **Traversing** – The wooden fascia hides the heavy-duty traversing system. The aluminum track is powdercoated to coordinate with the pole's finish. Hand drawn with batons, cord drawn and motorized options available.

Round Poles available in 2", 2-1/4", and 3" diameter in 16' lengths made of poplar

Square pole 2-1/2" tall [1-1/2" tall available in the Svelte Collection. All of the J.L. Anthony poles are made of Poplar, an easily renewable wood source. All wood is sustainably grown in the United States and milled in a local facility close to the J.L. Anthony factory in Dallas, Texas.

Style	Diameter	Full Round	Traversing	Non-Traversing
 Smooth	3"	x	x	x
	2-1/4"	x	x	x
	2"	x	x	x
 Fluted	3"	x	x	x
	2-1/4"	x	x	x
	2"	x	x	x
 Grooved	3"	x	x	x
	2-1/4"	x	x	x
	2"	N/A	N/A	N/A

tracks



Available with Traverse systems or as stand alone tracks

JLA's traversing-hardware features extruded aluminum powder-coated tracks, designed to handle sleek modern looks and heavier-weight draperies.

Track specifications:

- Max length One way draw - 20 ft.
- Max length Split draw - 40 ft. (Spliced)
- Max weight - 80 lbs.

Track colors:

- White, Linen, Bronze, Black, Silver, Gold

Carriers:

The Dual Channel track can be fitted to accept all popular drapery heading styles:

- Pinch Pleat carriers with bearing rollers
- Ripplefold carriers with wheeled base 120%
100%
80%
60%
- Z-Fold
- Traversing rings

brackets, rings & tiebacks

PLAIN
SINGLE RETURN



PLAIN
DOUBLE RETURN



FIERRO
SINGLE RETURN



FIERRO
DOUBLE RETURN



END SOCKET



EURO CUP
SINGLE RETURN



EURO CUP
DOUBLE RETURN



SMOOTH RING



FLUTED RING



SMOOTH
TRAVERSING RING



FLUTED
TRAVERSING RING



DISCUS - 301



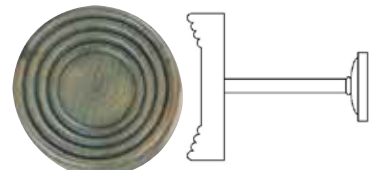
FINISH: DARK BRONZE

FLEUR DE LIS - 302



FINISH: HEIRLOOM SILVER

NOUVEAUX - 303



FINISH: MOSS

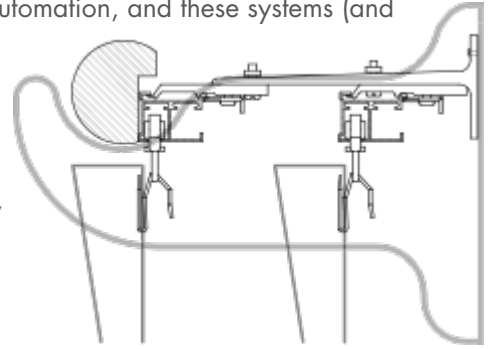
HERITAGE - 304



FINISH: ROSEWOOD W/ CUSTOM BLACK TRIM

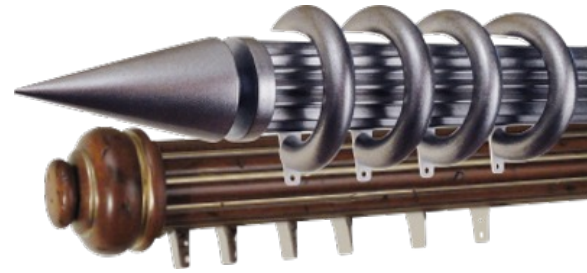
traversing & specialty systems

Traversing Systems When a client draws open their shades and draperies, highly-finished materials and precision components combine to smoothly traverse window openings. Add in automation, and these systems (and their planning) get even more complicated. All of which is why designers rely on JLA's expertise in configuring and manufacturing both manual and automated traversing systems. From the heaviest of draperies and multi-layer treatments to the minimalist tracking of modern design, JLA makes the complex appear simple, assisting in all aspects of planning, installation and maintenance.



Standard Configurations – J.L. Anthony's wide variety of set-ups offers designers a great deal of flexibility. These configurations include:

- **Traversing Pole without Rings**
- **Traversing Pole with Rings**
- **Double Traverse without Rings (Over/Under Setup)**
- **Double Traverse with Rings (Over/Under Setup)**
- **Non-Traversing Pole w/Rings & Traversing Under Drapery**
- **Ceiling Mount Option with Adjustable Bracket**



When the situation calls for a special bracket or special projection, we can meet the need. These same set-ups apply to motorized products as well.

Specialty Applications While standardized traversing systems may not always be applicable for the arches, bays and corners found in high-end residential, it's simply not possible to throw JLA a curve in these applications. Our expertise in these highly-technical designs has lead the industry for decades ... we're the go-to provider for architects and designers making a statement in residential and commercial spaces.

Because this is a multifaceted process, we encourage our designer and architect clients to open a dialogue with us early in the process. We can even assist you in preparing presentation materials. Once designs are approved, our designers and craftsmen utilize your customer supplied measurements and (full-sized, annotated) templates to fabricate both manual and motorized traversing systems. Most any shape can be accommodated. Contact your J.L. Anthony dealer for more information to order curved, bay and arched systems.



motorized systems

Today's smart homes are seeing automation and connectivity advances at breathtaking rates. And as lights, thermostats, audio/video and safety systems now respond to wall switches, remote controls and tablet or smart phone/watch apps, **we are most excited by the developments in drapery hardware.**

30 years ago, J.L. Anthony was a pioneer in adapting our custom hardware to early motorized systems, and that leadership continues today as we bring our clients integrated luxury design solutions for residential and commercial installations. J.L. Anthony offers motors, switches, software and hardware interfaces from all the best sources, including **Somfy, Lutron, BTX.**

No matter how challenging the space, JLA's specialty-coated traversing hardware allows draperies to effortlessly glide through curves, arches, bays and lengthy spans. **Add to those high-efficiency tracks our stunning poles and finials dressed in our standard and custom finishes and you have interior design interpreted as a moving art form.**

Our client service consultants will work with your contractors, electricians, audio/video companies and drapery workrooms to assure that the perfect system is matched to your clients' needs.

Customer-Provided Motorized Tracks – For those who want to supply their own motorized tracks, J.L. Anthony offers a COM program. By having the motor supplier drop-ship the system to our factory, we can meticulously fit the track to our poles, making sure all settings and hardware are ready for easy installation.

The JLA Staff is well-versed in all automation communication protocols including IR, RF, RTS, RS232, Z-Wave, QED and QS. We can work with every motorization provider.

Getting in touch with all the available controls, sensors and apps is simply a matter of submitting a request to your JLA Rep or Dealer. We can help you navigate to the latest technology and coordinate your system for any size installation.



 **LUTRON**
 **somfy**
 **BTX**



SVELTE

MOTORIZED DRAPERY TRACKS FROM J.L. ANTHONY

There's a popular misconception that in home automation, the drapery track is to be



We beg to differ, and who better to introduce a line of motorized made-to-measure rods than J.L. Anthony? Our new Svelte line is a slimmer, more contemporary line of drapery hardware that greatly simplifies the motorization process with built-in motor tracks that

accommodate **Lutron, Somfy Glydea or BTX Classic** motors.

- **Three Wood Finishes:** Mahogany, Blackened Oak and Honey Maple
- **Six Metallic Finishes:** Pewter, Dark Bronze, Stainless Steel, Gold, Dark Copper and Matte Black
- Available in up-to 30'spliced or 15'unspliced drapery rod widths
- Production time in most cases is four weeks or less. Two weeks standard w/ any one of nine Svelte finishes
- Curves and bends are not available with Svelte
- Pinch Pleat or Ripplefold
- Custom Somfy Glydea fabrications available
- Custom Finishes Available (quoted on request)
- Two Finial Styles
- Mitered Elbow Returns
- Also available manual cord draw or baton draw
- call, fax, or e-mail for quote

J.L. Anthony

SVELTE ACCOMMODATES

LUTRON®
BTX® somfy®



Svelte finishes shown

Also available in finishes on the pages to follow

Sleek 1-1/2" profile



gold collection



The Gold Collection finishes from J.L. Anthony all fulfill the look and feel of real gold. Each component is individually covered with the golden covered metal leaf. Afterwards the hand applied glazing and antiquing of the metal covering gives the warm, rich effect of an aged golden treasure.



ANTIQUED GOLD* (AG)



BRIGHT GOLD LEAF (BGL)



BURNISHED GOLD* (BG)



CHURCH STREET GOLD* (CSG)



Don't see the finish you need?
The artisans of J.L. Anthony can custom match an object or create a special finish on request.

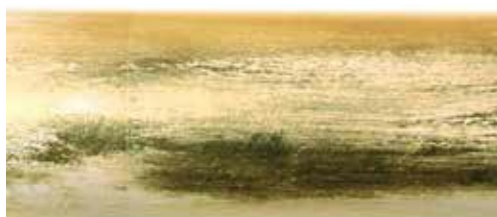
***A JLA Premium Finish.** See our Pricing Guide for specifications.



PROVENCAL GOLD* (PG)

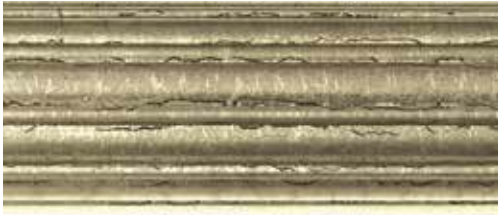


SUNSET GOLD* (SG)



silver collection

The J.L. Anthony Silver finishes are individually finished to the customer's specifications, and create a stunning and substantial appeal in any window treatment. Combine the Silver finishes with Gold painted accents to create a truly one-of-a-kind aesthetic.



ARGENT* (AR)



BRIGHT SILVER LEAF (BSL)



PEWTER* (PE)



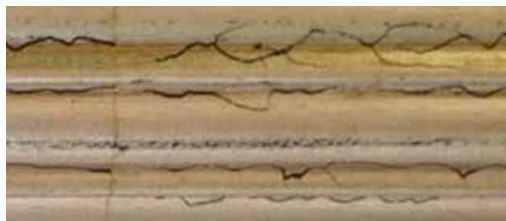
HEIRLOOM SILVER* (HS)



PLATINUM* (PL)



SILVER ROYALE* (SR)



TARNISHED SILVER* (TS)



Don't see the finish you need?
The artisans of J.L. Anthony can custom match an object or create a special finish on request.

***A JLA Premium Finish.** See our Pricing Guide for specifications.



exotic & metallics

Through the magic of the painted finish, the artists of J.L. Anthony can apply texture and color to emulate the true look and feel of an old iron post with Classic Iron, the sleekness of Stainless Steel or the exotic allure of Bamboo. All of these can be applied to any of our J.L. Anthony products.



SAMOA (SM)



TAHITI (TI)



TONGA (TO)



BLACK NICKEL (BN)



CLASSIC IRON* (CLI)



CRACKED ICE (CI)



DARK BRONZE (DB)



DARK COPPER (DC)



STAINLESS STEEL (SS)



Don't see the finish you need?
The artisans of J.L. Anthony can custom match an object or create a special finish on request.

solid, faux & textured

A kaleidoscope of color and tactile beauty, the Faux and Texture finishes of J.L. Anthony include the depth and beauty of Tortoise shell, Burled Walnut that looks like the real thing, or Travertine with the look of polished marble. All of the finishes in this collection are available in a choice of sheen. Custom coloring is available too.



ARCTIC WHITE (AW)



BLACK LACQUER (BL)



COPPER FIRE (CF)



FAUX BURLED WALNUT (BW)



FAUX TORTOISE SHELL (TOS)



PARCHMENT (PA)



PIANO BLACK (PB)



SAGE (SA)



TRAVERTINE (TR)



wood tones

J.L. Anthony has a Wood Tone finish for every design you can imagine. Hickory, Pecan, Pine and Mahogany are just a few of the many wood finishes available. If the wood color required isn't in the J.L. Anthony selections, contact your dealer to get information about our custom finishing. With our strike-off process you can be assured to get a perfect match every time.



BLACK MAPLE (BMP)



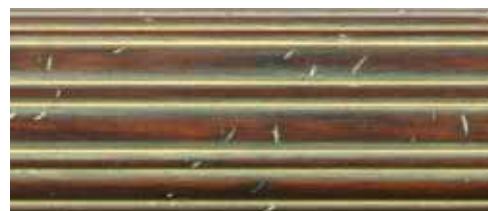
BURNT SIENNA (BS)



CHESTNUT (CH)



CORDOVAN MAHOGANY (CM)



DARK PICKLED (DPI)



DARK WALNUT (DWN)



DISTRESSED PECAN (DP)



DRIFTWOOD (DW)



wood tones



EBONY (EB)



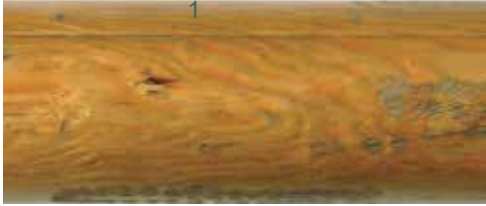
ENGLISH WAXED PINE (EWP)



FRENCH PINE (FP)



HICKORY (HK)



LIGHT CHERRY (LC)



LIGHT WALNUT (LW)



MOSS (MS)



PICKLED WHITE (PW)

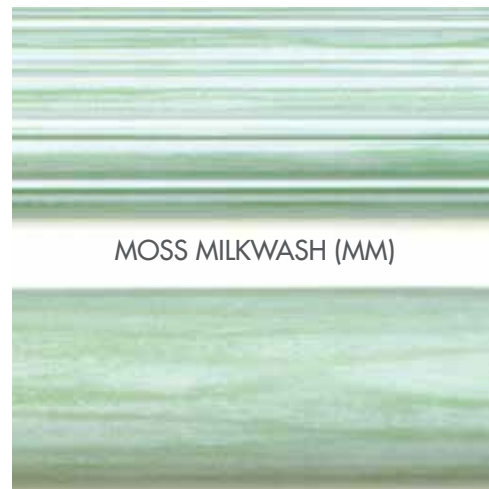


ROSEWOOD (RW)

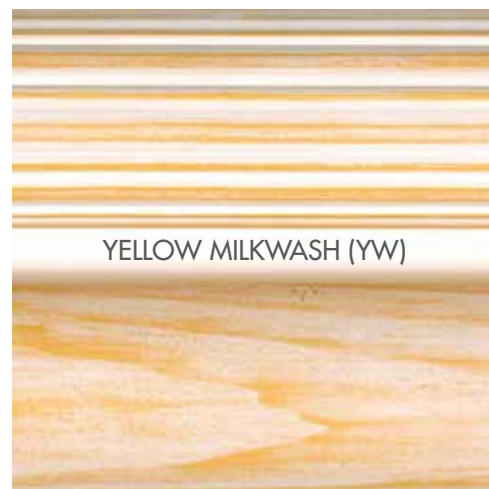
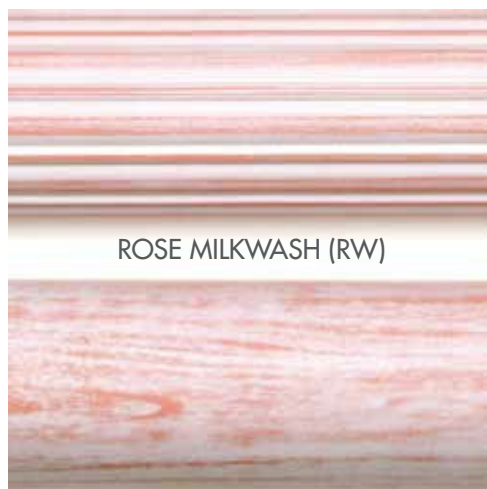


milkwash collection

The soft texture and pale hues of the Milkwash colors are a splendid touch to add to that Shabby Chic, Nursery or Kitchen interior. Combine the different colors and add trim to get the perfect match to your fabrics and finishes.



Don't see the finish you need?
The artisans of J.L. Anthony can custom match an object or create a special finish on request.



upholstered & custom finishes

Upholstered Finishes When a painted finish just won't do, consider having J.L. Anthony cover your poles and finials with your selection of fabric. The artisans in the J.L. Anthony workroom will meticulously attach your fabric, making sure every seam and pattern is matched to perfection. Fabric poles may be covered flat or gathered. Choose from three finial selections for upholstery and embellish them with ruffles and trims of your selection. Leathers and specialty fabrics can be creatively combined with our painted finished finials, rings, and accessories for a one-of-a-kind design statement.

Upholstered Options

J.L. Anthony does not provide fabrics for upholstery. The customer provides their fabric and trim (if applicable). JLA will fabricate and assemble the system so it is ready to install, right out of the box.

Two Styles of Covering poles:

Flat – Smooth Flat fabric. Patterns matched across the pole, if applicable

Shirred – Fabric gathered on the pole.

Three Finial Styles:

Stratford (Ball Finial) – With or without ruffle

Plymouth (Acorn Finial) – With or without ruffle

Cap – no ruffle available

Custom Finishes Even with over 50 finishes in the J.L. Anthony offerings, there are times when a unique finish is required. The expert artists of J.L. Anthony can replicate an existing pattern from your fabric, finish sample, paint chip or most anything to integrate your window treatments with an existing design.

If you're after an original finish, that too is achievable. Working from your supplied drawings or descriptions, we will develop solutions for your review, and provide a strike-off sample. Upon approval the project will be manufactured and finished to specifications. This will truly elevate your designs to create rooms of distinction.

JLA's artisans are as remarkably adept at duplicating paint patterns and combinations as they are creating original finishes for your projects. Contact us to get your samples in the works.



J.L. Anthony Sales Quote

Ona Drapery Hardware Co., 5320 Arapahoe Avenue, Boulder, CO 80303

fax 888-231-4026

e-mail info@onadrapery.com

ord date		quoted by		date		shop		must	
cust. #		inspct. by		date		date		ship	
P.O. #		boxed by		date		job		ship	
terms		shipped by		date		number		via	
sold to:						ship to:			
address						address 1			
city/state						address 2			
phone						city/state			
fax						phone			
contact						s/m:			

FR <input type="checkbox"/> Full Round	300 <input type="checkbox"/> 3" diam	SM <input type="checkbox"/> Smooth	<input type="checkbox"/> An. Aluminum Track	FINISHES:	<input type="checkbox"/> Standard
TR <input type="checkbox"/> Traversing	225 <input type="checkbox"/> 2 1/4" diam	FL <input type="checkbox"/> Fluted	<input type="checkbox"/> Dark Bronze Track	<input type="checkbox"/> Premium	<input type="checkbox"/> Custom
NT <input type="checkbox"/> Non-Traversing	200 <input type="checkbox"/> 2" diam	GR <input type="checkbox"/> Grooved	<input type="checkbox"/> Gold Track	<input type="checkbox"/> RTF-Paint	<input type="checkbox"/> Uph-Flat
	138 <input type="checkbox"/> 1 3/8" diam	RF <input type="checkbox"/> Rope	<input type="checkbox"/> Linen White Track	<input type="checkbox"/> RTF-Stain	<input type="checkbox"/> Uph-shirred
		SQ <input type="checkbox"/> Square	<input type="checkbox"/> White Track		
			<input type="checkbox"/> Black Track		

ROD #	Quan.	Rod W. in in.	# Ring	Stack L C R	Control L R Len	End Type left right	Finish # and Name	Rods in Feet	Unit Price	Extended Price
Maximum Rod Length is 16'. All Rods over 192" will be center spliced unless specified where by client										
								0	\$ -	\$ -
								0	\$ -	\$ -
								0	\$ -	\$ -
								0	\$ -	\$ -
								0	\$ -	\$ -
								0	\$ -	\$ -
FINIAL #	Finial Name						Finish # and Name	Quan.	Unit Price	Extended Price
								0	\$ -	\$ -
								0	\$ -	\$ -
RING #	Smooth	Fluted		Traverse	Non-traverse	Finish # and Name	Quan.	Unit Price	Extended Price	
							0	\$ -	\$ -	
							0	\$ -	\$ -	
BRKT #	Smooth	Fierro		Cup	4"R	7"R	Finish # and Name	Quan.	Unit Price	Extended Price
								0	\$ -	\$ -
concealed brkts included??				YES <input type="checkbox"/>	NO <input type="checkbox"/>			0	no charge	\$ -
								0		\$ -
concealed brkts included??				YES <input type="checkbox"/>	NO <input type="checkbox"/>			0	no charge	\$ -
								0		\$ -
ITEM #	Specialty Items / Description						Finish # and Name	Quan.	Unit Price	Extended Price
								0		\$ -
								0	\$ -	\$ -
								0	\$ -	\$ -
								0	\$ -	\$ -
								Subtotal		\$ -
								0%	\$ -	\$ -
									\$ -	\$ -

Special Instructions: **Allow for Wood Brackets?** YES ☐ NO ☐

PACKAGING	\$ -
FREIGHT CHGS	\$ -
TOTAL	\$ -
DEP. REQUIRED	\$ -
BAL. DUE	\$ -

Please sign and return with deposit or payment in full to initiate order. Please indicate payment method. **X**

CHECK or VISA-- M/Card CARD#/EXP DATE/CVC# / /