

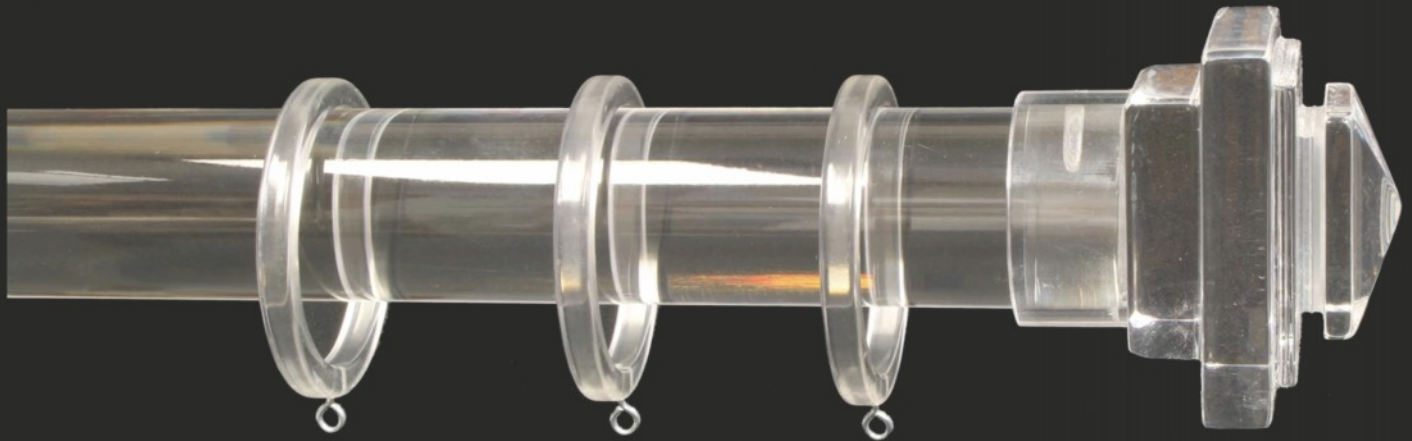
# ONA ACRYLIC RODS

Product Spotlight!

## ONA ACRYLIC RODS 1-5/8" DIAMETER

Specify our crystal clear Acrylic rods for a sophisticated and modern look. Select a complementary Acrylic components or Mix and match from any of our 1-5/8" finials, brackets and rings to suit the décor. Our 1-5/8" Acrylic rods are rigid enough to span 5' – 6' between brackets in most cases. Maximum lengths available are 96". For longer lengths, we offer a special Acrylic cement to create a welded splice on site. Acrylic rods and components are recommended for light to medium weight treatments.

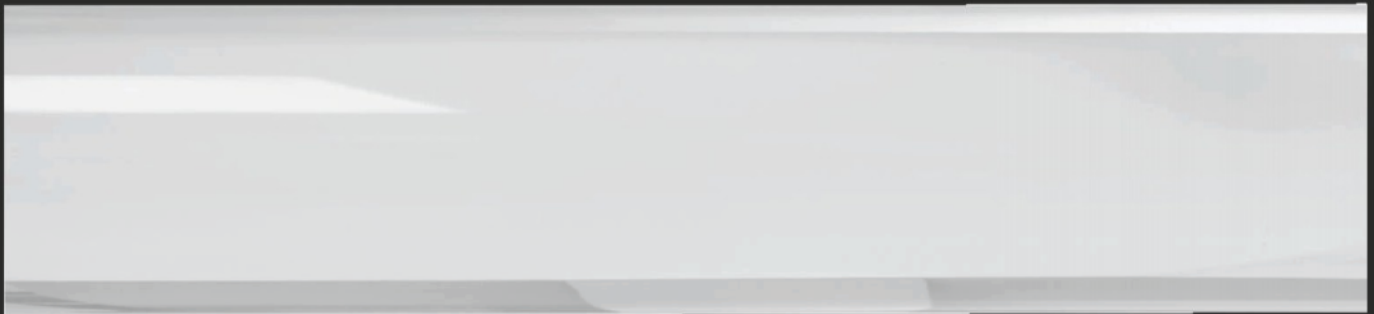
Acrylic Barcelona shown



### Easy to order,

1. Specify: Rod length, Finials, Brackets and Rings. Mix and match any of our 1-5/8" finials, brackets, rings and findings.
2. Specify finish for all findings if other than Acrylic.
3. If rods will be spliced, let us know the overall rod length, and the splice locations. Order Acrylic cement for spliced rods.

Ona Acrylic Rod, 1-5/8" diameter



**ONA**<sup>TM</sup>

ONA Drapery Hardware Company, Inc.



ONA DRAPERY HARDWARE COMPANY INC.

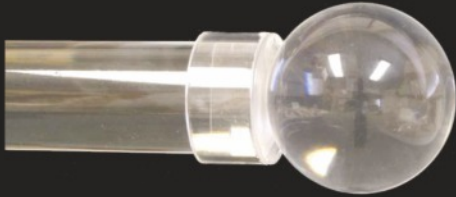
5320 Arapahoe Ave., Boulder, Co. 80303

1-800-231-4025 / FAX 1-888-231-4025

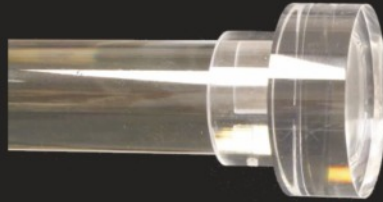
www.onadrapery.com

## ONA ACRYLIC FINIALS

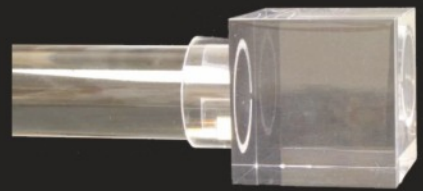
ACRYLIC BALL 2½"L x 2½"H



ACRYLIC CIRCLET 1"L x 2½"H



ACRYLIC CUBE 2½"L x 2½"H



ACRYLIC FACATED CUBE

2½"L x 2½"H



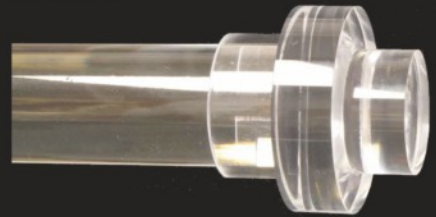
ACRYLIC JEWEL

2½"L x 2 ¼"H



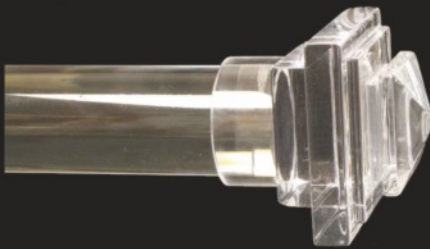
ACRYLIC MERIDIAN

1½"L x 2½"H



ACRYLIC BARCELONA

2"L x 2¾"H



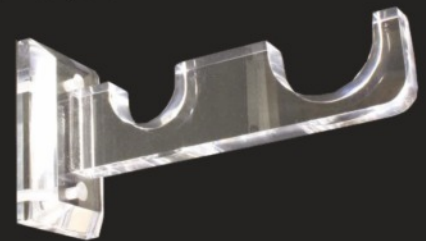
ACRYLIC BRACKET

2¼" x 3¾"; 3½" P



ACRYLIC DOUBLE BRACKET

2¼" x 3¾"; 3"-6" P



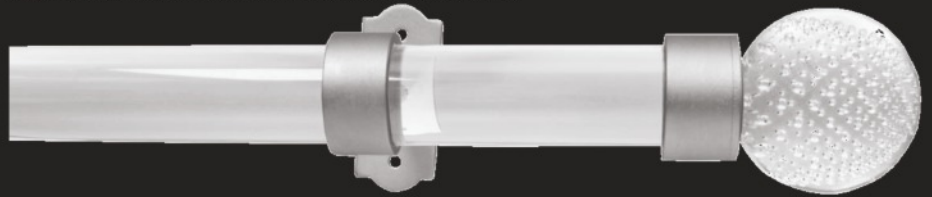
ACRYLIC RING

2" I.D. x 2½" O.D.



Mix and Match examples...

ArtGlass Carbonated Clear Ball 3" / Finish: Clear / Brite Silver / Deco Pass Through Bracket



Please contact us for a quotation on your next project.

*Please see our Master Catalog for our full selection!*

Copyright © 2014 Ona Drapery Hardware Company, Inc. All rights reserved. Printed in the United States of America

