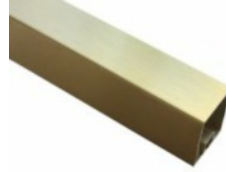
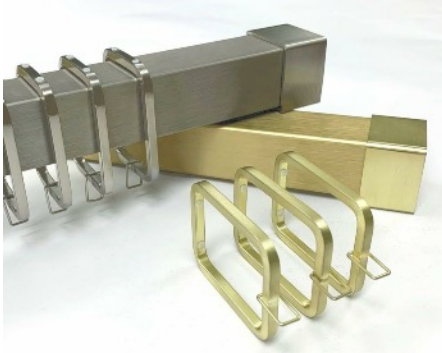




BELLEVUE

Add clean lines to your drapery designs with contemporary hardware from the Bellevue Collection. The square shape echoes modernism. A fresh & chic look that fits any room style. Crafted of durable aluminum in your choice of nickel or gold. Choose drapery rings or traverse glides. Either option delivers an ultra-smooth draw experience. This traverse system maneuvers pleated and ripplefold drapery styles.



DCU26: 4' pole
DCU27: 8' pole

1-1/2" Square Metal Pole

2 FINISHES-
Specify

SGO-SATIN GOLD
or
BNK-BRUSHED NICKEL



DCU01
METAL ENDCAP



DCU02
ACRYLIC FINIAL



DCU40
SINGLE BKT
4" PROJ



DCU41
EXTENDED BKT
6-1/4" PROJ



DCU42
CEILING BKT
2" PROJ



DCU46
DOUBLE BKT
3-12", 6-3/4" PROJ



DCU43
INSIDE MOUNT
BRACKET



DCU50
40" BATON



DCU30
METAL RING



CORD DRAW
OPTION



RIPPLEFOLD
COMPONENTS [WHITE]
SPECIFY FULLNESS
60%, 80%, 100%, 120%
OVERLAP OR BUTTMASTER



PINCH PLEAT
COMPONENTS
[WHITE OR BLACK]