

## Sea Coast

Bring a minimalist spirit to windows with Sea Coast Collection. It bridges organic beauty and shiny hard edges. The juxtaposition of natural textured wood poles and contrasting metal accessories creates supremely inviting window hardware. Idyllic in beachside homes or ski slope oases... and everything in between. This collection allows you to create versatile looks with either square drapery rings, or traverse glides for a ring-free aesthetic. Finish options include 3 warm woods + 5 modern metals. Square poles are 1-1/2" in diameter.

Finishes: **Textured Natural (NAT)**  
**Textured Driftwood (DWD)** **Textured Brown (TBK)**

### NATURAL MINIMALISM



1 1/2" SQUARE WOOD POLE  
 NATURAL (NAT)  
 2" Length DCU23  
 4' Length DCU24  
 8' Length DCU25



1 1/2" SQUARE WOOD POLE  
 DRIFTWOOD (DWD)  
 2" Length DCU23  
 4' Length DCU24  
 8' Length DCU25



1 1/2" SQUARE WOOD POLE  
 BROWN (TBK)  
 2" Length DCU23  
 4' Length DCU24  
 8' Length DCU25

POLE OPTIONS  
 Pole lengths are cut to order.



STRAIGHT CUT DP900



MITRE CUT DP901

Poles operable with drapery rings or traverse glides in collection.



ENDCAP  
 BRUSHED GOLD  
 DCU01/BGO



ENDCAP  
 BRUSHED NICKEL  
 DCU01/BNK



ENDCAP  
 ONYX  
 DCU01/ONX



ENDCAP  
 POLISHED NICKEL  
 DCU01/PNK



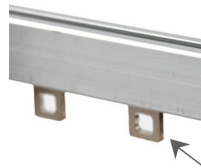
ENDCAP  
 SATIN GOLD  
 DCU01/SGO



# 5 Metal Finishes



METAL RING  
DCU30



TRAVERSE GLIDE  
FOR WOOD POLE  
DMX35/STL

To calculate # of glides needed,  
divide rod length by 4. Example:  
(96" rod / 4 = 24 glides)



36" CLEAR ACRYLIC BATON DPA9036/ACR  
48" CLEAR ACRYLIC BATON DPA9048/ACR

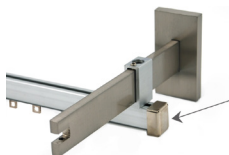
## COMPONENTS TO CREATE A DOUBLE ROD SYSTEM.



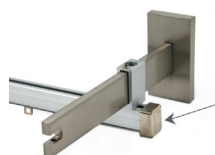
SECONDARY RAIL  
4' Length DMX25/SNI  
8' Length DMX26/SNI  
Available in satin nickel only.



TRAVERSE GLIDE FOR  
SECONDARY RAIL  
DMX35/STL



RAIL ENDCAP  
DMX51/STL



RAIL ADAPTER  
DCU51/SNI



SINGLE BRACKET  
DCU40



EXTENDED BRACKET  
DCU41



CEILING BRACKET  
DCU42



INSIDE MOUNT  
DCU43