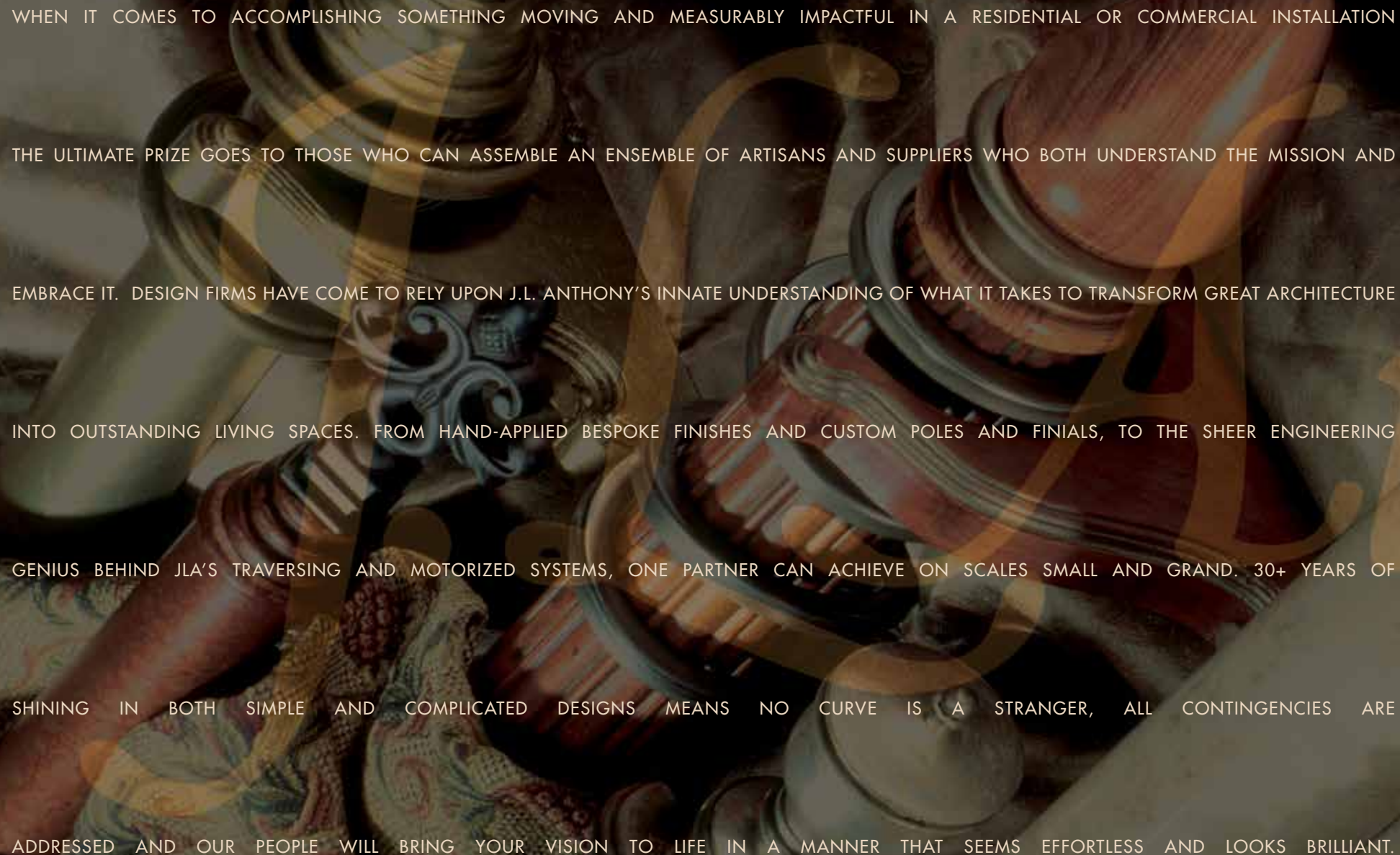


CUSTOM DRAPERY HARDWARE

art+architecture

J.L. Anthony



WHEN IT COMES TO ACCOMPLISHING SOMETHING MOVING AND MEASURABLY IMPACTFUL IN A RESIDENTIAL OR COMMERCIAL INSTALLATION

THE ULTIMATE PRIZE GOES TO THOSE WHO CAN ASSEMBLE AN ENSEMBLE OF ARTISANS AND SUPPLIERS WHO BOTH UNDERSTAND THE MISSION AND

EMBRACE IT. DESIGN FIRMS HAVE COME TO RELY UPON J.L. ANTHONY'S INNATE UNDERSTANDING OF WHAT IT TAKES TO TRANSFORM GREAT ARCHITECTURE

INTO OUTSTANDING LIVING SPACES. FROM HAND-APPLIED BESPOKE FINISHES AND CUSTOM POLES AND FINIALS, TO THE SHEER ENGINEERING

GENIUS BEHIND JLA'S TRAVERSING AND MOTORIZED SYSTEMS, ONE PARTNER CAN ACHIEVE ON SCALES SMALL AND GRAND. 30+ YEARS OF

SHINING IN BOTH SIMPLE AND COMPLICATED DESIGNS MEANS NO CURVE IS A STRANGER, ALL CONTINGENCIES ARE

ADDRESSED AND OUR PEOPLE WILL BRING YOUR VISION TO LIFE IN A MANNER THAT SEEMS EFFORTLESS AND LOOKS BRILLIANT.



CONTENTS

OUR STORY

PAGES 4 & 5

FINIALS

PAGES 6 - 9

POLES

PAGE 10

TRAVERSING SYSTEMS

PAGE 11

MOTORIZED SYSTEMS

PAGE 12

SPECIALTY APPLICATIONS

PAGE 13

BRACKETS

PAGE 14

RINGS & TIEBACKS

PAGE 15

FINISHES

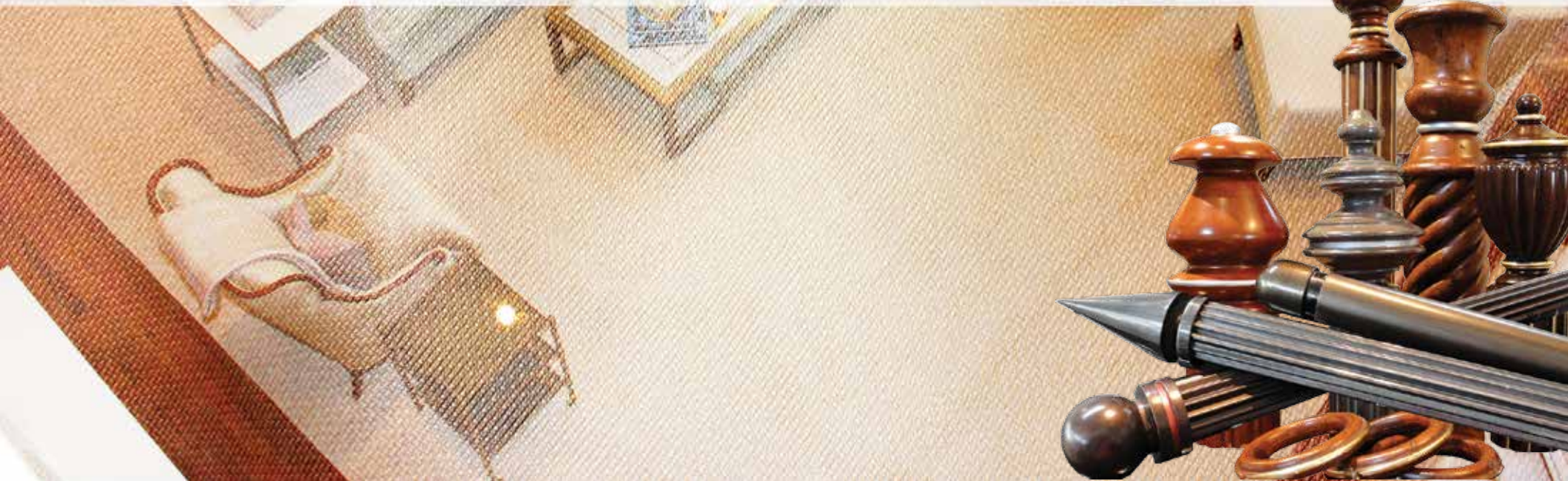
PAGES 16-24

CUSTOM FINISHES

PAGE 25

DESIGNER SPECS

PAGE 26



about J.L. Anthony

For 30 years, designers, architects and buyers have sought out J.L. Anthony for the finest custom designs and drapery hardware innovations ...

Today, J.L. Anthony products are installed in many of America's finest homes. Not surprisingly, they're also found in embassies, palaces, government buildings, and luxury hotels all over the world. But that wasn't always the case, in fact, until JLA developed a sophisticated model for specifying, producing and installing custom hardware designs, the entire drapery hardware niche was a fragmented marketplace. Custom orders required finding a specialist or master wood worker to craft pieces, and as you can imagine, pricing and quality was inconsistent at best.

In 1985, realizing there was pent-up demand for high-end drapery hardware, Lancaster & Associates started the "J.L. Anthony" line of custom hardware. Sold through designer showrooms in the major design centers across the nation, word spread about the product. The line of wooden 3" diameter poles with its simple selection of finials quickly became nationally known for its quality, accuracy, and reliable delivery. In the early 90's Interior Design Magazine named J.L. Anthony as its "Best New Product."

A CHANGING MARKETPLACE

Through the 1990's and mid-2000's founders Bruce Lancaster and Philip Clemmons watched as the market for custom draperies and hardware evolved; requiring broader design offerings and a deeper collection of finishes.

The response was substantial, as JLA began sourcing and developing multiple pole designs in varying diameters. The finial collection blossomed to accommodate both traditional and modern palettes, and the array of available finishes grew to make certain every design request could be met from either a stock offering or a custom request.

As the burgeoning design and architecture industries scaled,





so did our need for more space and distribution. Our current showroom and manufacturing facility in Dallas is projected to handle increased production through 2020, and our expanding dealer network is growing in its proficiency at specifying and delivering our high-quality goods to a satisfied following.



BECOMING AN ALWAYS-ON PRESENCE

As online and mobile channels have soared in popularity, J.L. Anthony has continually upgraded its browsing and product knowledge base through our JLANthony.com site. We also provide designers, architects and buyers a proprietary set of tools for specifying work and developing estimates via our to-the-trade-only JLA DesignerShowroom.com.



Our people also engage daily through social media designer and luxury-goods communities to share updates, trends, and recent Client installations. We also work to share projects and profiles of our Client Designers and Architects via the JLA DesignerShowcase stories regularly published on our blog and social media pages.



A NEVER-CHANGING COMMITMENT

In all, J.L. Anthony has come a long way from Bruce and Phil working from a Chevy station wagon by-day and crafting Roman shades at night. What has not changed, is our commitment to, and reputation for being reliable, prompt, thorough and accurate.

Add to that list “innovative” and “service-driven,” and you have some insight into JLA’s secret sauce for driving the entire drapery hardware industry. We have always been pioneers, and we will always respond to needs and ideas in our sector. Best of all, we will always design, produce, deliver and install the most beautiful, artfully-crafted designs anyone could hope to place in rooms of distinction. When the project calls for bespoke or extraordinary pieces, J.L. Anthony has an exceptional solution.



finials

When you peruse a finely-designed room, it is the attention to detail that defines the ensemble. And nothing quite showcases fine details better than the many finial choices designed, fabricated and finished to specification by J.L. Anthony.

From our classic Bordeaux, Essex, or Mt. Vernon styles to the more contemporary Sphere and Zylinder, JLA's designs meet your most demanding interior challenge and provide the ideal end piece to JLA's coordinated pole styles and finishes.

Our finials are composed of wood, resin, metal, and combinations of those materials. Any of the more than 30 finial styles can be finished in any of our hand applied finishes or finished to match your specifications.



finials

BORDEAUX - 01



FINISH: DISTRESSED PECAN W/CUSTOM TRIM

MT. VERNON - 02



FINISH: BLACK MAPLE

ESSEX - 03



FINISH: CUSTOM MILKWASH

LEXINGTON - 04



FINISH: PIANO BLACK & CORDOVAN MAHOGONY

PLYMOUTH - 05



FINISH: LIGHT CHERRY

CAP - 06



FINISH: GOATSKIN

THIN CAP - 06S



FINISH: CUSTOM LEATHER UPHOLSTERED

ABBOTT - 07



FINISH: DARK BRONZE

STRATFORD - 08



FINISH: ARGENT

GILLON - 09



FINISH: FAUX TORTOISE SHELL

LORRAINE - 10



FINISH: CUSTOM GOLD

ARMSTRONG - 11



FINISH: CHURCH STREET GOLD

finials

NORMANDY - 12



FINISH: LIGHT WALNUT

PRESCOTT - 14



FINISH: DISTRESSED PECAN

MIRAMAR - 15



FINISH: FRENCH PINE

BEVERLY - 16



FINISH: EBONY

BELFORT - 18



FINISH: DARK BRONZE & STAINLESS STEEL

DREXEL - 19



FINISH: ARGENT

LIVINGSTON - 23



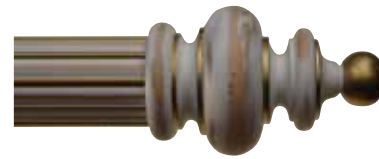
FINISH: ANIQUE GOLD W/ CUSTOM TRIM

TULIP - 25



FINISH: PROVENCIAL GOLD W/ CUSTOM TRIM

BANNISTER - 26



FINISH: NATURAL MILKWASH W/ CUSTOM GOLD TRIM

SPINDLE - 27



FINISH: DARL PICKLED W/ CUSTOM SILVER TRIM

CHIPPENDALE - 28



FINISH: ROSE MILKWASH W/ CUSTOM TRIM

URN - 29



FINISH: HICKORY W/ CUSTOM TRIM

finials

RUSSIAN - 30



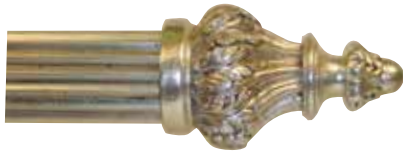
FINISH: TRAVERTINE

ACANTHUS - 37



FINISH: ANTIQUE GOLD & DISTRESSED

LOUIS - 31



FINISH: HEIRLOOM SILVER

FLAME - 33



FINISH: CORDOVAN MAHOGANY

BELCLAIRE - 38



FINISH: BLACK MAPLE

SPHARE - 40



FINISH: CORDOVAN MAHOGONY

LEAF - 32



FINISH: CUSTOM GOLD LEAF

NAPOLEAN - 35



FINISH: TARNISHED SILVER W/ CUSTOM TRIM

WURFEL - 39



FINISH: PIANO BLACK W/ GOLD TRIM

KEGEL - 41



FINISH: BLACK NICKEL

CANTEBURY - 36



FINISH: PIANO BLACK & TARNISHED SILVER

ZYLINDER - 42



FINISH: PARCHMENT W/ CUSTOM TRIM

poles

Wooden drapery poles from J.L. Anthony are the difference between curtain rods and a well-designed room.

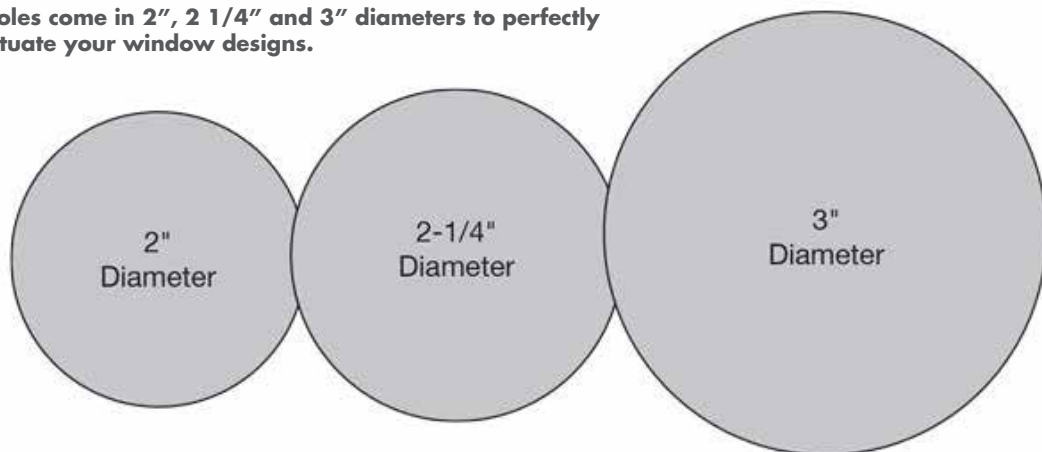
With three diameters and five designs, there is an answer for any interior design. All poles are meticulously cut and assembled to customers' exact specifications. Poles come in three styles for specific applications:

- **Full Round** – The classic style. Requires purchasing separate brackets. Recommended for decorative use only.
- **Non-Traversing** – A J.L. Anthony exclusive. Allows for placement of brackets anywhere along the back side of the pole. The concealed brackets, included with the pole are heavy duty and are finished to match the finish on the pole.
- **Traversing** – The wooden fascia hides the Heavy Duty traversing system. The aluminum track is powder coated to coordinate with the pole's finish. Hand draw with batons, Cord draw and motorized.

Poles are available in one piece up to 16 ft. Any pole longer than 16 ft. will be spliced. Splices are a butt joint and will be located in the center of the pole unless otherwise specified on the order.

All of the J.L. Anthony poles are made of Poplar, an easily renewable wood source. All wood is grown in the United States and milled in a local facility close to the J.L. Anthony factory in Dallas, Texas.

JLA poles come in 2", 2 1/4" and 3" diameters to perfectly accentuate your window designs.



handsome rope



boldly grooved



elegantly smooth



richly fluted

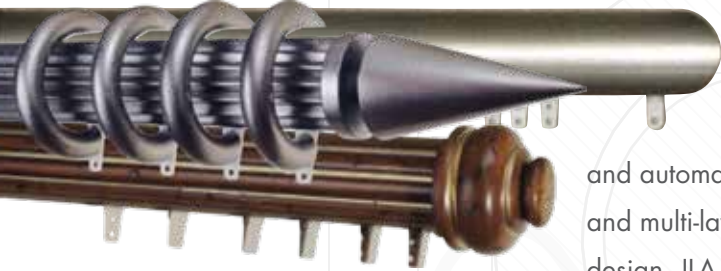


sleekly square

traversing systems

Long gone are the days when poles and rings alone ruled drapery hardware.

Today in boardrooms, ballrooms and bedrooms, when a client draws open their shades and draperies, there are hundreds of moving parts at work. Highly-finished materials rely on precision components to smoothly traverse window openings. Add in automation and systems can get even more complicated as does the planning required to accommodate such technology.



All of which is why designers rely on the expertise of JLA in configuring and manufacturing both manual and automated traversing systems. From the heaviest of draperies and multi-layer treatments to the minimalist tracking of a modern design, JLA affords our clients an increased level of flexibility as we readily assist in all aspects of planning, installation and maintenance to guarantee the expected outcome.

Standard Configurations – J.L. Anthony's wide variety of set-ups for traversing systems offers designers a great deal of flexibility when creating their window treatments.

These configurations include:

- **Traversing Pole without Rings**
- **Traversing Pole with Rings**
- **Double Traverse without Rings (Over/Under Setup)**
- **Double Traverse with Rings (Over/Under Setup)**
- **Non-Traversing Pole w/Rings & Traversing Under Drapery**
- **Ceiling Mount Option with Adjustable Bracket**

When the situation calls for a special bracket or special projection, J.L. Anthony can meet the need. These same set-ups apply to motorized products as well.

See the J.L. Anthony Technical Guide for detailed information on configurations for all pole diameters.



JLA's traversing-hardware features extruded aluminum powder-coated tracks, designed to handle sleek modern looks and heavier-weight draperies.

Track specifications:

- **Max length One way draw - 20 ft.**
- **Max length Split draw - 40 ft. (Spliced)**
- **Max weight - 80 lbs.**

Track colors:

- **White**
- **Linen**
- **Bronze**
- **Black**
- **Silver**
- **Gold**

Carriers:

The Dual Channel track can be fitted to accept all popular drapery heading styles:

- **Pinch Pleat carriers with bearing rollers**
- **Ripplefold carriers with wheeled base**
 - 120%
 - 100%
 - 80%
 - 60%
- **Z-Fold**
- **Traversing rings**



motorized systems

JL Anthony offers systems from all the best sources. With a full knowledge of most all systems, we can supply products from **Somfy**, **Lutron**, **BTX**, and **G-Rail**. Our customer service consultants will work with your contractors, electricians, audio-video companies, and drapery workrooms to assure that the perfect system is matched to your clients needs.

Customer-Provided Motorized Tracks – For those who want to supply their own motorized tracks, JL Anthony offers a COM program. By having the motor supplier drop-ship the system to our factory, we will meticulously fit the track to our poles making sure all settings and hardware are ready for easy installation.

J.L. Anthony has motorization specialists on staff to discuss your home automation needs.



The JLA Staff is well-versed in all automation communication protocols including IR, RF, RTS, RS232, Z-Wave, QED and QS. We can work with every motorization provider.



Rear view of JLAnthony pole with BTX system

We offer Motorized Systems from:

- **Somfy** (offered in 6 colors)
- **Lutron**
- **BTX**
- **Goelst**

specialty applications

While standardized traversing systems may not always be applicable for the curves, bays and corners found in high-end residential architecture, it's simply not possible to throw JLA a curve in these applications.

Because this is a multifaceted process, we encourage our designer and architect clients to open a dialogue with us early in the process. We can even assist you in preparing presentation materials.

Once designs are approved, our designers and craftsmen utilize your customer supplied measurements and (full-sized, annotated) templates to fabricate both manual and motorized traversing systems. Most any shaped room can be accommodated.

Contact your J.L. Anthony dealer for more information to order curved, bay and arched systems.



brackets

Decorative Brackets – These brackets are for the decorative finishing touch to our traversing and non-traversing poles. They are not required for installation. (Full Round Poles are the exception) Any of the J.L. Anthony finished may be applied to these brackets.

On traversing poles decorative brackets may only be used on the extreme ends next to the finials. The traversing drapery fits in between the decorative brackets. Allowance must be made for the additional thickness of the brackets. Call J.L. Anthony customer service for specifics.

Standard return lengths are for 4" & 7" drapery returns. Custom projection and returns length are available on request.

PLAIN
SINGLE RETURN



PLAIN
DOUBLE RETURN



FIERRO
SINGLE RETURN



FIERRO
DOUBLE RETURN



END SOCKET



EURO CUP
SINGLE RETURN



EURO CUP
DOUBLE RETURN



rings

Wooden Rings - The finishing touch on both stationary and traversing applications. The Full Round wooden rings are recommended for nontraversing decorative applications. Not intended to move easily on the pole. Concealed brackets prevent movement as well.

Traversing rings are for application when the intention is to open & close the drapery. These rings are on a snap-in glider for easy installation and operation. Traversing rings applications include a master carrier set-up that provides for a 3.5" overlap . These rings can be adapted to most motorized systems. NOTE: Traversing rings are not available on any curved pole, manual or motorized.

SMOOTH RING



FLUTED RING



SMOOTH TRAVERSING RING



FLUTED TRAVERSING RING



tiebacks

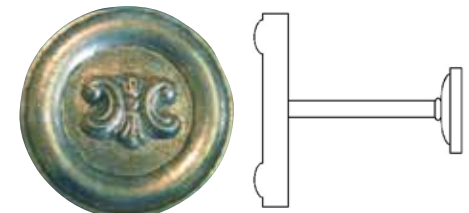
Tieback holders - Our four styles can be purchased in any of the more than 50 JL Anthony finishes, or they can be custom painted to match or compliment your design. All of the tieback holders can be ordered with either a 4" or 6" projection stem and base. The brass finished metal bases are easily secured to the wall surface.

DISCUS - 301



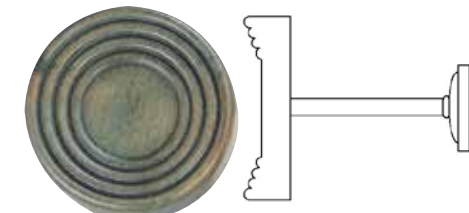
FINISH: DARK BRONZE

FLEUR DE LIS - 302



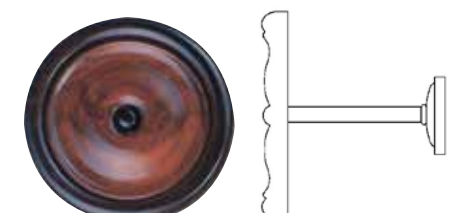
FINISH: HEIRLOOM SILVER

NOUVEAUX - 303



FINISH: MOSS

HERITAGE - 304



FINISH: DARK BRONZE

finishes

To view a J.L. Anthony pole, finial, ring or bracket is to behold a custom piece of design. Even the cleaner, simple finishes and lines of our contemporary pieces are the product of specialty painting and handwork. Get into a faux finish or a metallic style and you're witnessing the beauty that comes from multiple layers, expertly applied.

Because of the diverse needs for high-end residential and commercial projects, we categorize our finishes into eight collections for ease of identification and specification:

- **EXOTICS**
- **METALLICS**
- **GOLD COLLECTION**
- **SILVER COLLECTION**
- **WOOD TONES**
- **MILKWASH**
- **UPHOLSTERED**
- **SOLID, FAUX & TEXTURED**



gold collection

The Gold Collection finishes from J.L. Anthony all fulfill the look and feel of real gold. Each component is individually covered with the golden covered metal leaf. Afterwards the hand applied glazing and antiqing of the metal covering gives the warm, rich effect of an aged golden treasure.



ANTIQUED GOLD* (AG)



BRIGHT GOLD LEAF (BGL)



BURNISHED GOLD* (BG)



CHURCH STREET GOLD* (CSG)



PROVENCAL GOLD* (PG)



SUNSET GOLD* (SG)



CHURCH STREET GOLD* (CSG)



PROVENCAL GOLD* (PG)



SUNSET GOLD* (SG)



Don't see the finish you need?

The artisans of J.L. Anthony can custom match an object or create a special finish on request.



silver collection

The same applies to the J.L. Anthony Silver finishes ... every piece is individually finished to the customer's specifications. Combine the Silver finishes with Gold painted accents to create a truly one-of-a-kind product.



ARGENT* (AR)



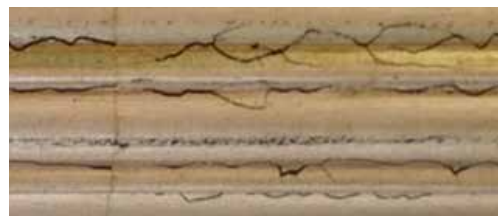
BRIGHT SILVER LEAF (BSL)



HEIRLOOM SILVER* (HS)



PEWTER* (PE)



PLATINUM* (PL)



TARNISHED SILVER* (TS)





SAMOA (SM)



TAHITI (TI)



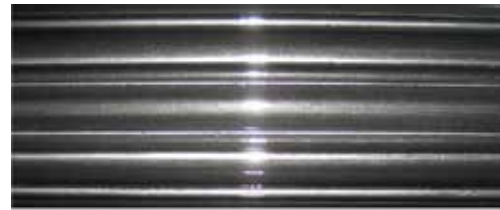
TONGA (TO)



exotic & metallics

Through the magic of the painted finish, the artists of J.L. Anthony will apply the texture and color to emulate the depth and beauty of Tortoise shell, The sleekness of Stainless Steel or the exotic allure of Bamboo.

All of these can be applied to any of our J.L. Anthony products



BLACK NICKEL (BN)



CLASSIC IRON* (CI)



DARK BRONZE (DB)



DARK COPPER (DC)



STAINLESS STEEL (SS)



wood tones

J.L. Anthony has a Wood Tone finish for every design you can imagine. Hickory, Pecan, Pine and Mahogany are just a few of the many wood finishes available.

If the wood color required isn't in the J.L. Anthony selections, contact your dealer to get information about our custom finishing. With our strike-off process you can be assured to get a perfect match every time.



BLACK MAPLE (BMP)



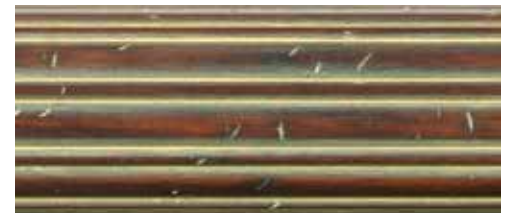
BURNT SIENNA (BS)



CHESTNUT (CH)



CORDOVAN MAHOGANY (CM)



DARK PICKLED (DPI)



DARK WALNUT (DWN)



DISTRESSED PECAN (DP)



DRIFTWOOD (DW)





EBONY (EB)



ENGLISH WAXED PINE (EWP)



FRENCH PINE (FP)



HICKORY (HK)



LIGHT CHERRY (LC)



LIGHT WALNUT (LW)



HICKORY (HK)



LIGHT CHERRY (LC)



LIGHT WALNUT (LW)



HICKORY (HK)



LIGHT CHERRY (LC)



LIGHT WALNUT (LW)



MOSS (MS)



PICKLED WHITE (PW)



ROSEWOOD (RW)



MOSS (MS)



PICKLED WHITE (PW)



ROSEWOOD (RW)

solid, faux & textured

A kaleidoscope of color and tactile beauty, the Faux and Texture finishes of J.L. Anthony include Classic Iron that has the true look and feel of old iron post, Burled Walnut that looks like the real thing, or Travertine with the look of polished marble.

All of the finishes in this collection are available in a choice of sheen. And as with our Custom Finishing, custom coloring is available too.



ARTIC WHITE (AW)



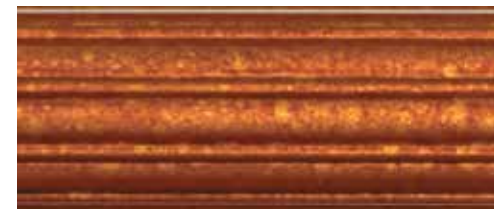
BLACK LACQUER (BL)



COPPER FIRE (CF)



FAUX BURLED WALNUT (BW)



FAUX TORTOISE SHELL (TOS)



PARCHMENT (PA)



PIANO BLACK (PB)



SAGE (SA)



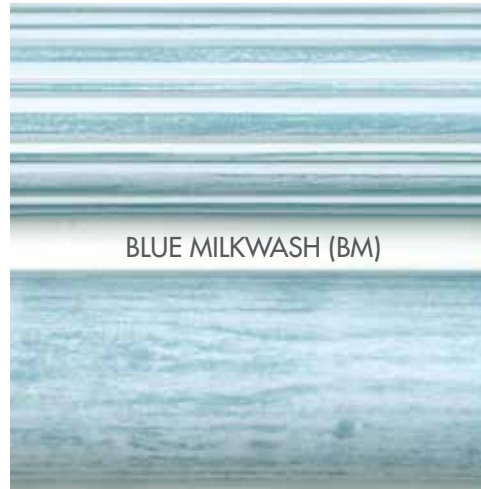
TRAVERTINE (TR)



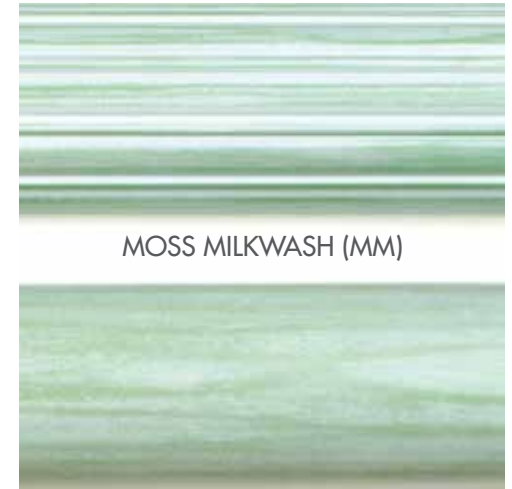
milkwash collection

The soft texture and pale hues of the Milkwash colors are a splendid touch to add to that Shabby Chic, Nursery or Kitchen interior.

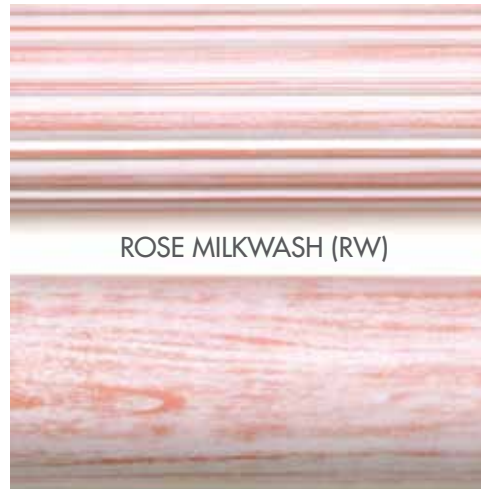
Combine the different colors and add trim to get the perfect match to your fabrics and finishes.



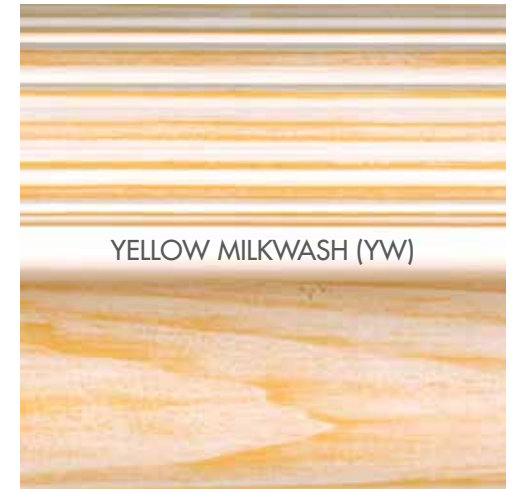
BLUE MILKWASH (BM)



MOSS MILKWASH (MM)



ROSE MILKWASH (RW)



YELLOW MILKWASH (YW)



upholstered

When a painted finish just won't do, consider having JL Anthony cover your poles and finials with your selection of fabric. The artisans in the JL Anthony workroom will meticulously attach your fabric, making sure every seam and pattern is matched to perfection. Fabric poles may be covered flat or gathered.

Choose from the finials selections for upholstery and they can be embellished with ruffles and trims of your selection. Leathers and specialty fabrics can be creatively combined with our painted finished finials, rings, and accessories for a one of a kind design statement.

Upholstered Options

J.L. Anthony does not provide fabrics for upholstery. The customer provides their fabric and trim (if applicable). J.L. Anthony will fabricate and assemble the system so it is ready to install, right out of the box.

Two Styles of Covering poles:

Flat – Smooth Flat fabric. Patterns matched across the pole, if applicable

Shirred – Fabric gathered on the pole.

Three Finial Styles:

Straford (Ball Finial) – With or without ruffle

Plymouth (Acorn Finial) – With or without ruffle

Cap – no ruffle available



custom finishes

Even with over 50 finishes in the J.L. Anthony offerings, there are times when a unique finish is required.

The expert artists of J.L. Anthony can replicate an existing pattern from your fabric, finish sample, paint chip or most anything to integrate your window treatments with an existing design.

If you're after an original finish, that too is achievable. Working from your supplied drawings or descriptions, we will develop solutions for your review. Upon approval the project will be manufactured and finished to specifications.

This will truly elevate your designs to create rooms of distinction.

JLA's artisans are as remarkably adept at duplicating paint patterns and combinations as they are creating original finishes for your projects. Contact us to get your samples in the works.



designs, specs & service

Custom drapery hardware isn't a simple business. As in most interior projects, there are hundreds of variables to address. Add in the increasing complexity of motorized and integrated systems, or the exacting measurements for custom arches, bay windows, or massive spans of glass, and it is easy to see why good communication is essential for a successful outcome.

The good news is we not only have a growing network of highly-informed JLA Dealers, we also have trained staff available via telephone or face-to-face at our showroom in Dallas.

And with 30-plus years in this business, we know what to expect and when, so we can assist you in each step from early budget planning to client presentations, drawings and installation specs and requirements.

We have also revamped our online resource presence with not one but two sites for getting the information and responses you need 24/7. **JLAnthony.com** is our showcase site, with all the products, finishes and systems you need to understand

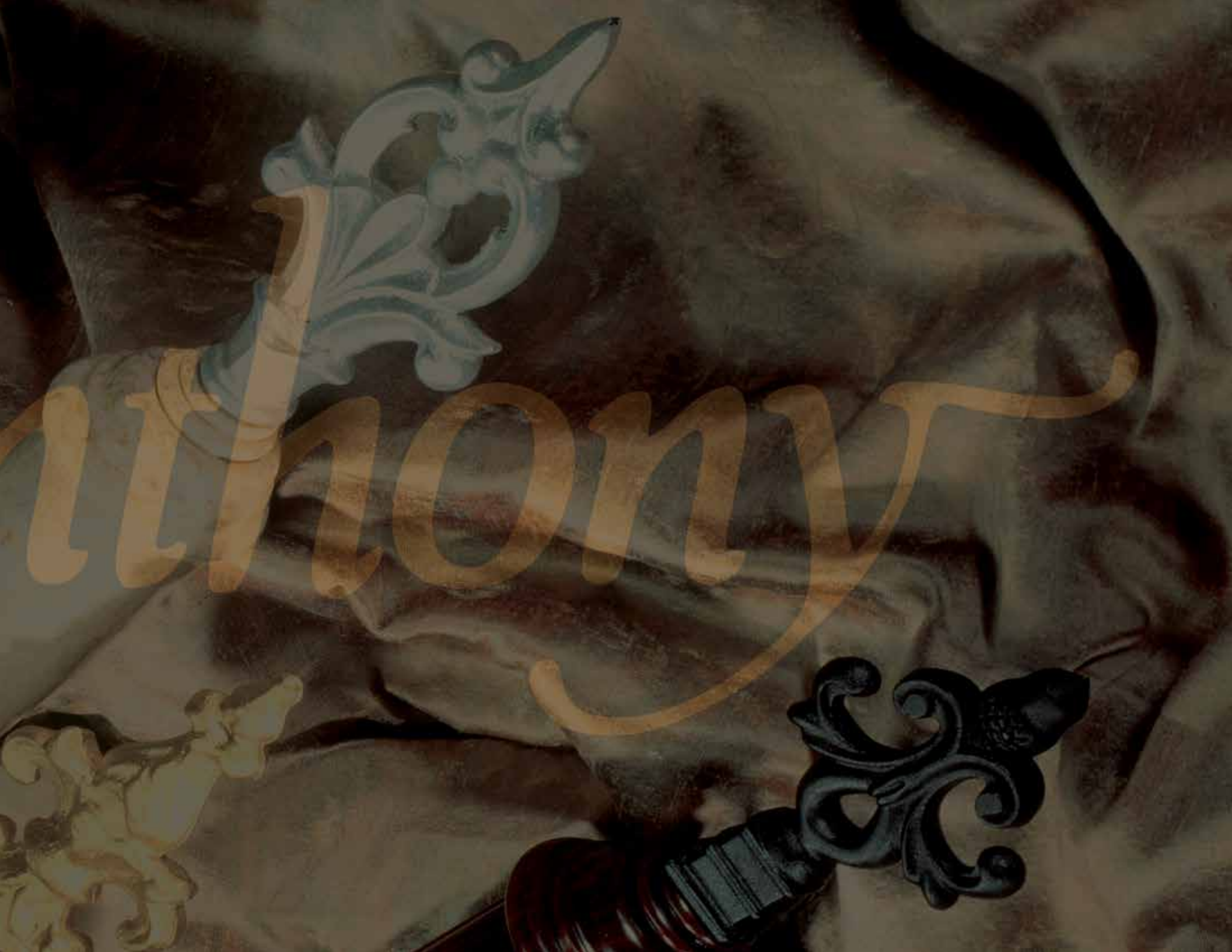


how remarkable our drapery hardware can be in both residential and commercial settings. You can browse, print, plot and plan whenever the muse strikes.

Once you have your ideas formulated, you'll want to learn more and start the nuts-and-bolts of your project. In our **JLADesignerStudio.com** site you'll find the proprietary specifics, schematics and data you need to start the specification process. You can also download our core pricing and technical documents. All it takes is an initial visit and a quick registration to access the **Designer Studio**.



We built this company on a foundation of exceptional service, and we are always open and interested in assisting you. Contact us for any additional answers, samples or needs you may have.





FOR ADDITIONAL INFORMATION



J.L. Anthony

CUSTOM DRAPERY HARDWARE | JLANTHONY.COM | JLADESIGNERSTUDIO.COM